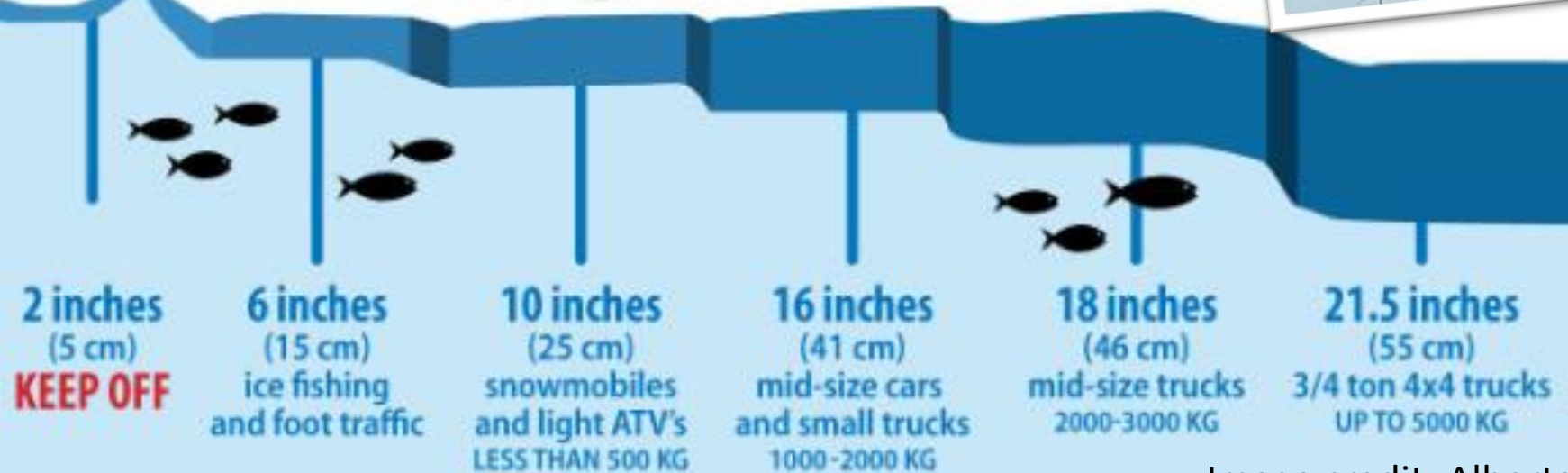


Minimum Ice Thickness

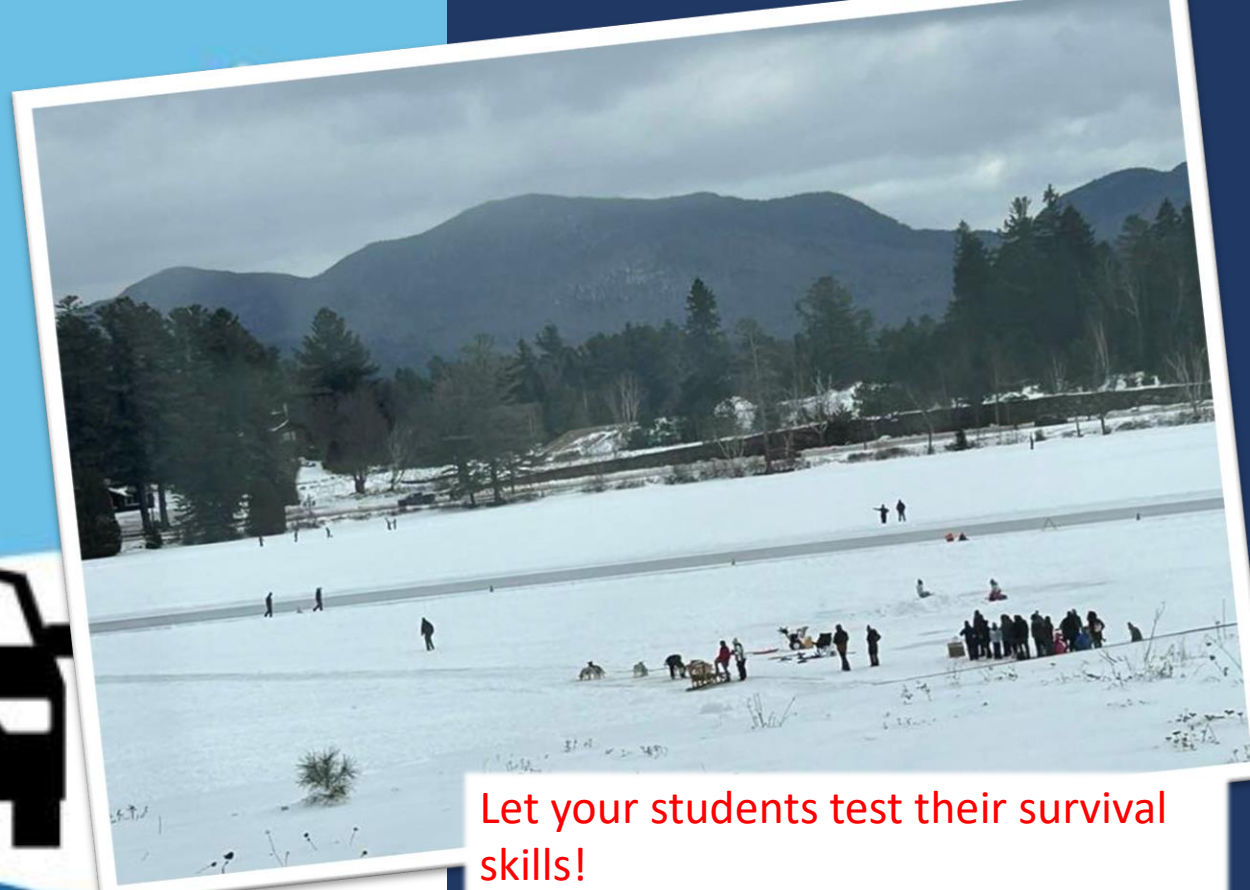
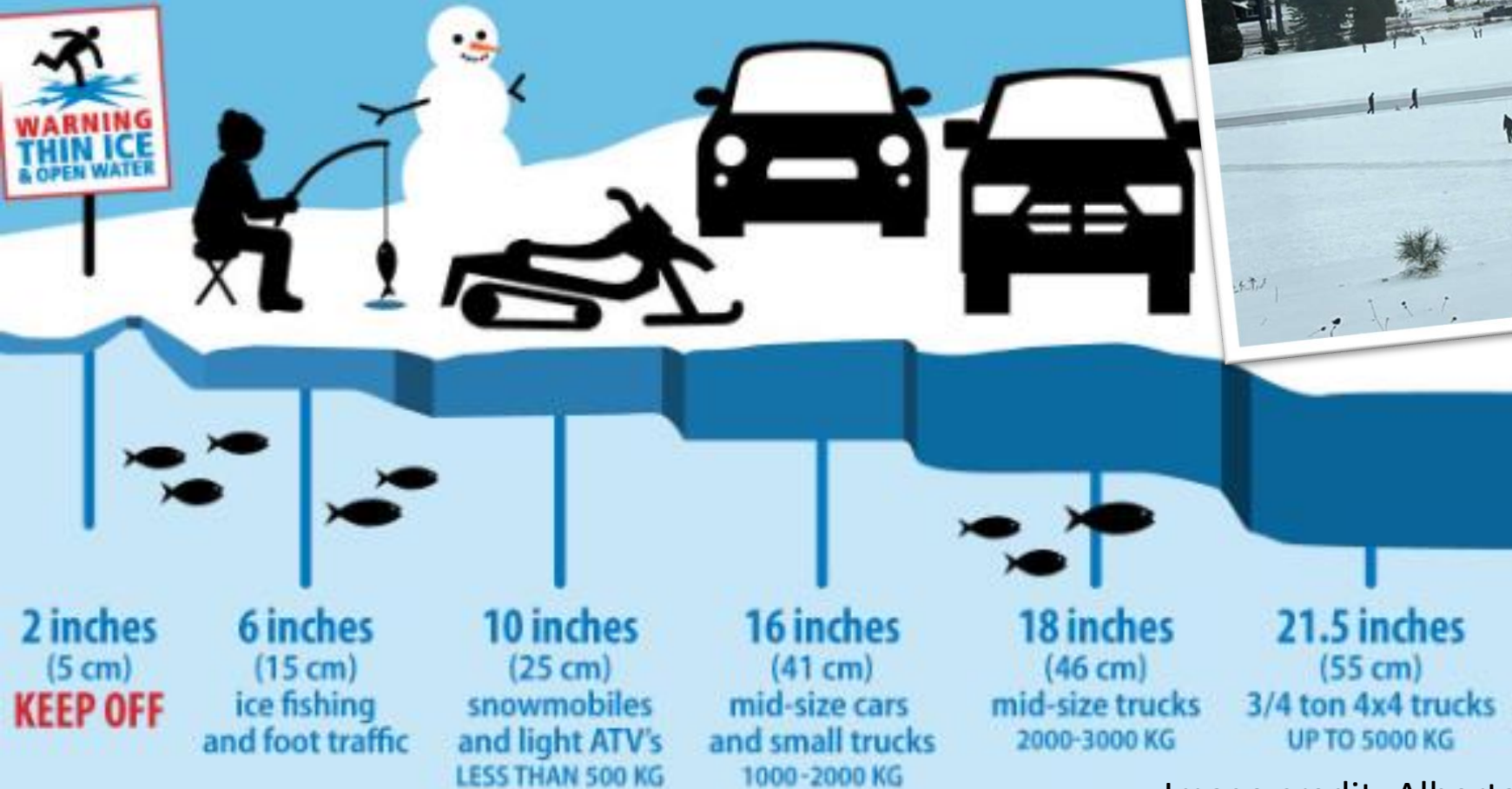
Guideline for loads parked for more than 2 hours but less than 7 days on clear, good quality ice



How would you determine the thickness of the ice on a frozen lake using only a ruler?

Minimum Ice Thickness

Guideline for loads parked for more than 2 hours but less than 7 days on clear, good quality ice



Let your students test their survival skills!
One option: make a hole and drop the ruler down a hole until you get a waterline on the ruler, then subtract that from the iceline. Or, tie the ruler to a string and hook it under the ice. Measure the length of the string needed to reach the ruler from the surface of the ice.