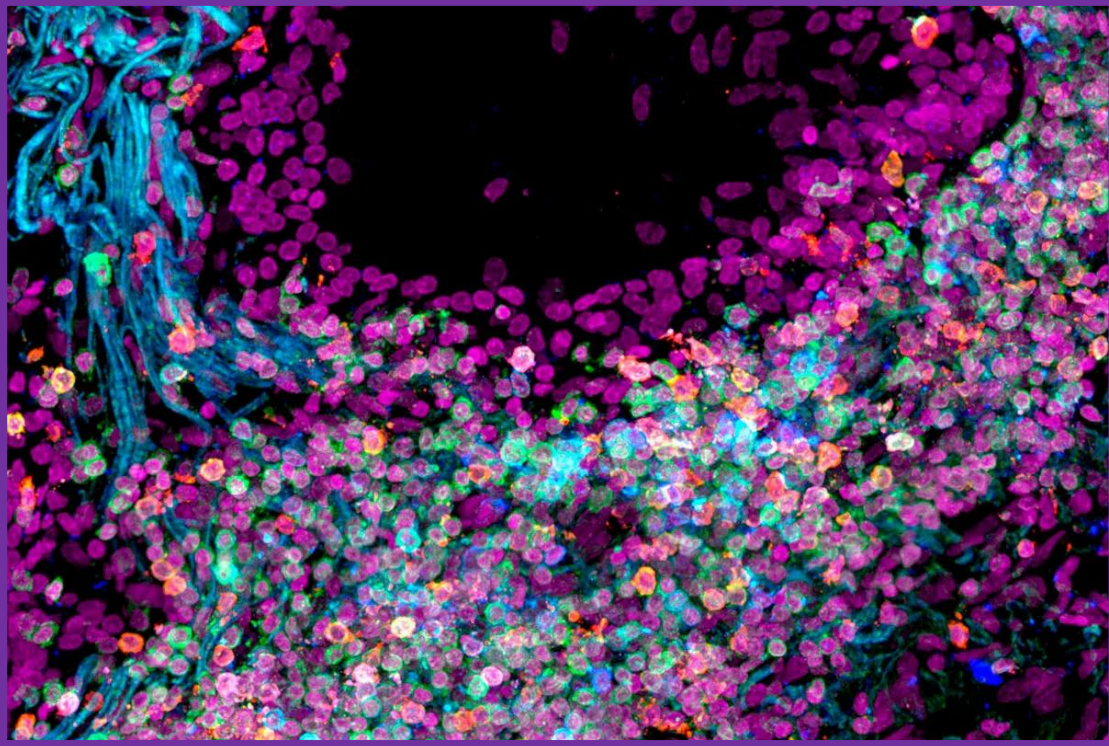
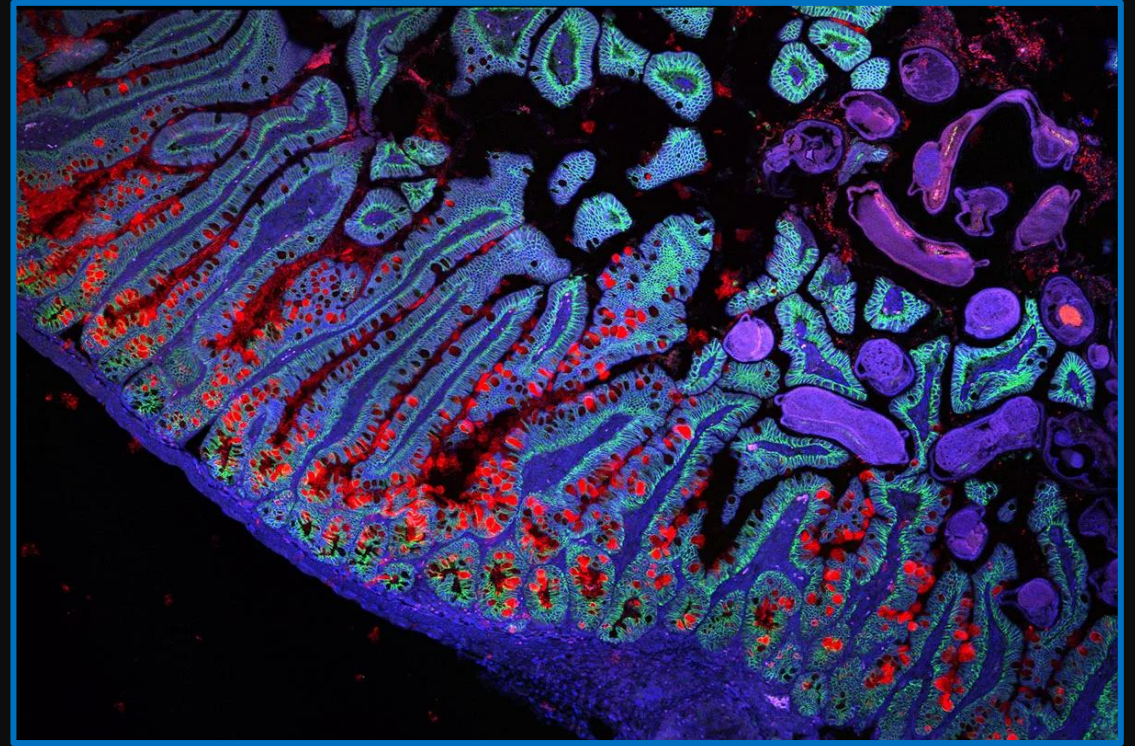


# Identify These Microscopic Images



- a) Human lung tissue
  - b) Confetti
  - c) Tiny krill swallowed by a baleen whale
  - d) Tree pollen
- Give your reason for the answer you selected

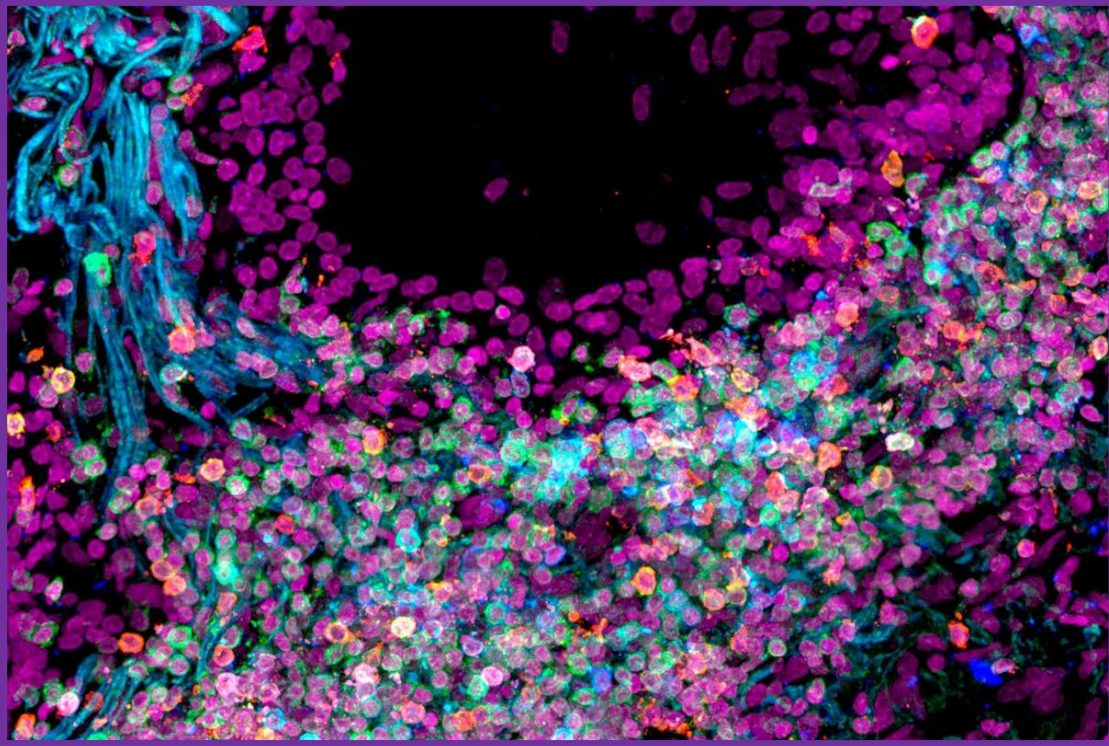
Image credit: Nathan Richo, University of Cambridge



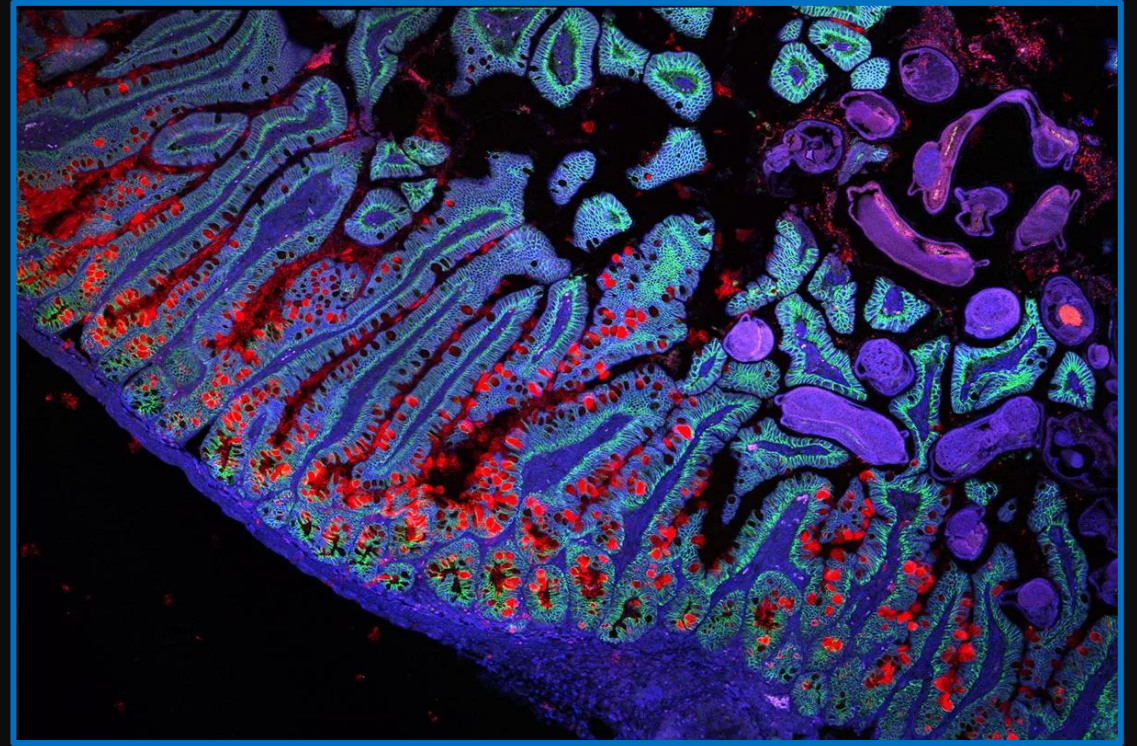
- a) Inside of a human cell
  - b) Layer under the bark of an oak tree
  - c) Brain, directly under the skull
  - d) Human small intestine
- Give your reason for the answer you selected

Image credit: Burgin, Rogel & Biton, Broad Institute

# Identify These Microscopic Images



a) Human lung tissue



d) Human small intestine

See this website for more info:

<https://www.sciencefocus.com/news/human-cell-atlas>